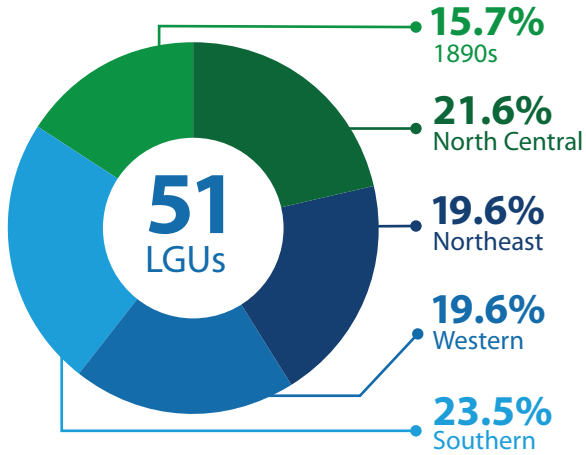
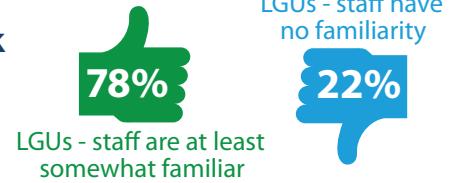


### Who Responded?

One response per LGU representing CE at that institution.



### CE National Framework for Health Equity and Well-Being familiarity:



### Health and well-being work in 2023

Not including SNAP-Ed and EFNEP funding.

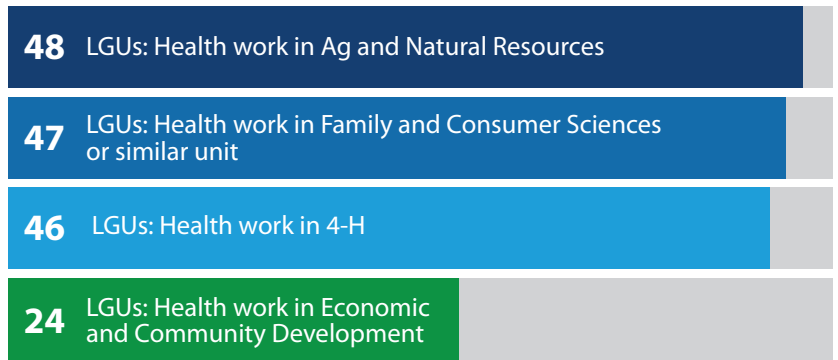
- \$140 mil** Estimate of external funding for health-related work (38 LGUs were able to respond; based on loose estimates)
- 960 staff** Estimate of dedicated (100% FTE) health and well-being positions (47 LGUs were able to respond; based on loose estimates)
- 11 LGUs** With a dedicated unit/center with CE focused on health and well-being
- 76% LGUs** Always/often engage with community coalitions focused on health

### Top 5 topics LGUs named as part of their health and well-being work

- Nutrition education and food safety
- Agricultural safety
- Chronic disease prevention and management
- Food systems and security
- Youth development with a focus on health and well-being

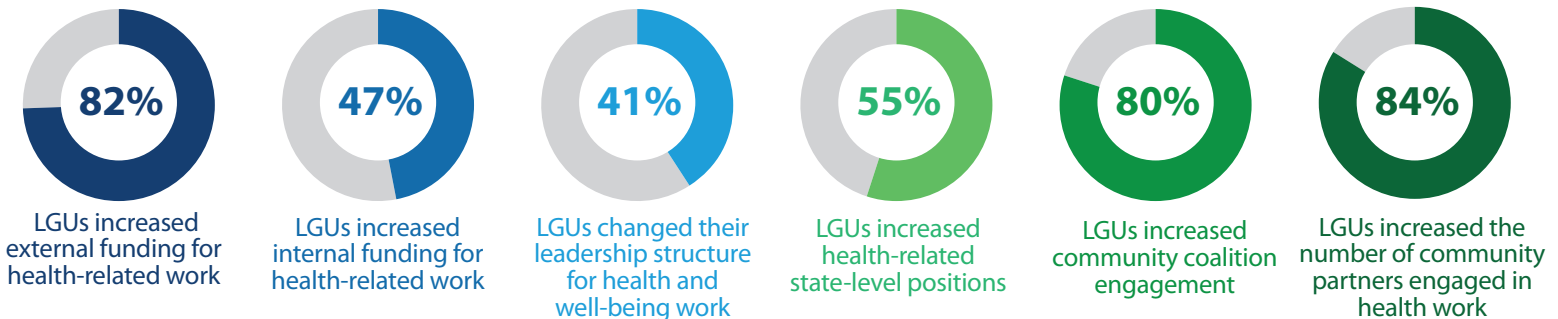


### Health work is occurring across Extension



### Changes in the past 5 years (2018-2023)

Not including SNAP-Ed and EFNEP funding.



### Growing cross-program measurement for health-related work

Cross-program measures are data collected across multiple projects or grants and reported at the unit, state, or regional level. Respondents allowed multiple responses.



### Full report with LGU discussion guide available:

<https://tinyurl.com/2xvpw3na>

Help complete the next survey in Fall 2024.